

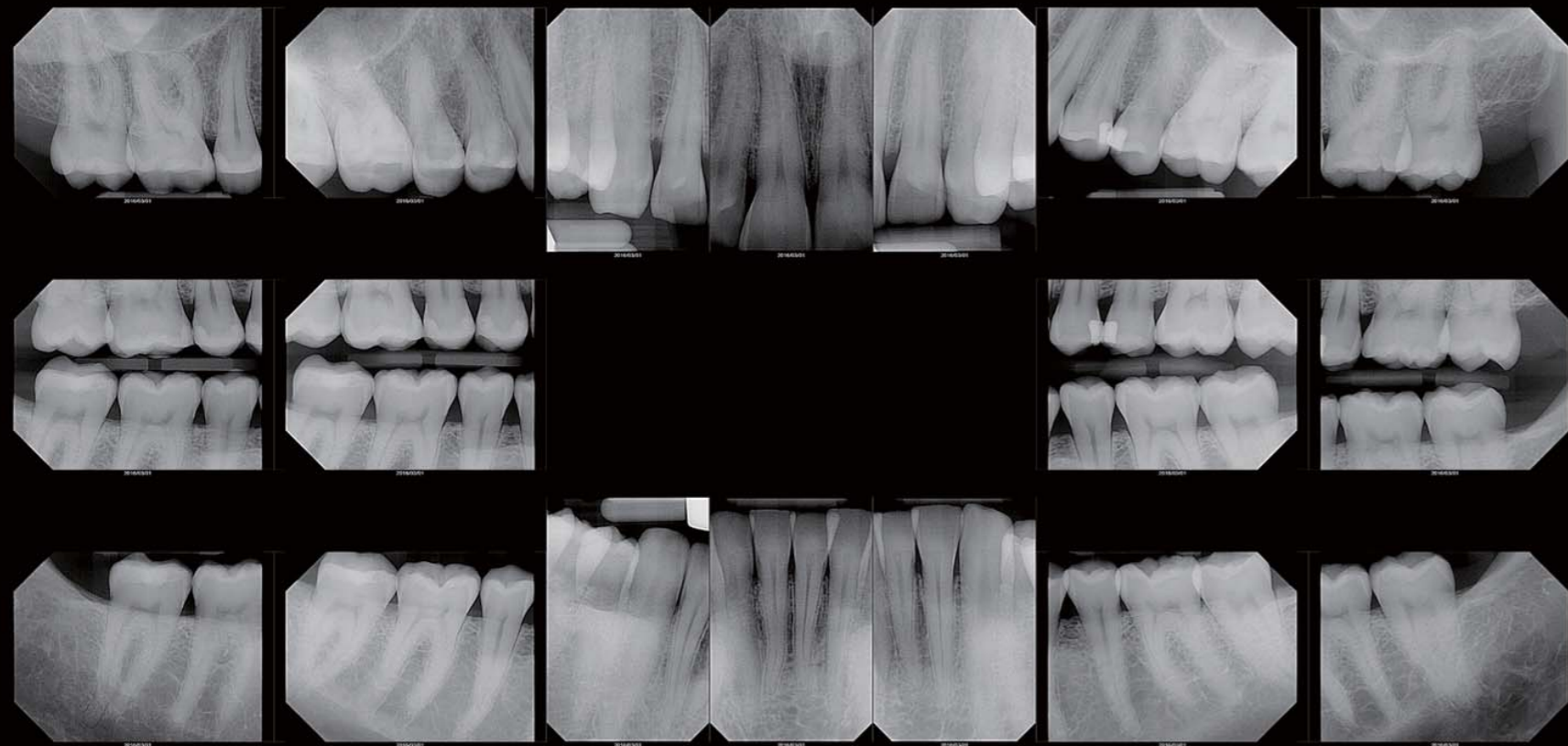


INTRAORAL IMAGING  
RIOsensor

# Outstanding intraoral sensor

Digitalize your intraoral examination with RIOSensor.  
Streamline workflow with high-resolution digital images.

 High-resolution images



Captured by XrayVision 4 - Apteryx Inc

 Ergonomic design

 Plug and Use

 Durability

 Size 1 & 2



Specifications are subject to change without prior notice.

## RIS500 Specifications

Outside dimensions  
Imaging area  
Pixel size  
Sensor Technology  
Scintillator  
Number of pixels  
Image resolution  
Connection  
Cable length

## Size 1

39x25mm  
30x20mm  
20x20µm  
Advanced CMOS with Optical fiber  
Csl.  
1.5 Megapixels  
25 lp/mm  
USB 2.0 high speed  
2 meters

## Size 2

42x30mm  
34x26mm  
20x20µm  
Advanced CMOS with Optical fiber  
Csl.  
2.2 Megapixels  
25 lp/mm  
USB 2.0 high speed  
2 meters



**Ray America Inc.**

725 River Road, Ste 118, Edgewater, NJ 07020, USA

**Phone** 1.800.976.4586 / **Fax** 1.310.861.1911

**Email** info@rayamerica.com

**Web** www.rayamerica.com

**Ray Co., Ltd.** 🏭

332-7, Samsung1-ro, Hwaseong-si, Gyeonggi-do, 18380, Korea

**Phone** +82.31.605.1000

**Email** ray\_overseas@raymedical.co.kr

**Web** www.raymedical.com



RBS-S02 (rev.1)

Design and specifications  
are subject to change  
without notice